

2021 Iron Butt Rally

Leg 3

Huntsville, Alabama to Provo, Utah



This packet describes the bonus locations available for Leg 3 of the 2021 Iron Butt Rally. Each location bonus entry provides the following information:

- Bonus Code
- Points Available
- Bonus Name
- Street address or nearest intersection/cross-street
- City and State
- GPS coordinates in degrees decimal rounded to the nearest 0.0001 degree
- Available hours
- Bonus description including important notes as needed
- Bonus requirements in *italic type*
- A photo of the bonus object

WARNING: DO NOT LEAVE ON A LEG UNTIL YOU HAVE VERIFIED THAT ALL PAPERWORK IS IN YOUR RALLY PACKAGE FOR THAT LEG. EACH PAGE IS NUMBERED. THIS IS YOUR RESPONSIBILITY.

CRITICAL: Please be respectful when placing your flag in photos. Private property and priceless museum pieces should never be used as your flag support.

This bonus listing is like a restaurant menu. If you order everything on the menu and eat it, you are going to get sick and perhaps die. Please choose bonus destinations carefully.

- ✓ All times are local unless otherwise specified.
- ✓ Unless otherwise specified, rally ID flags are required in all photos.
- ✓ To earn *any* bonus, you MUST claim it on the Claimed Bonus form. This includes:
 - ▶ Rest bonuses
 - ▶ Call-In bonuses
 - ▶ Tracking bonuses.

If you lose the Claimed Bonus form, you will earn no bonus points for the leg.

Monitoring Bonuses

Call-In Bonus

CALL3

1000 points

Call on Wednesday, June 30, 2021, between 5:00 AM to 5:00 PM MOUNTAIN DAYLIGHT TIME

The same procedure applies to all Call-in Bonuses available during the rally.

Call from anywhere.

Call and leave the following information:

- 1) Your name
- 2) Your rider number
- 3) Your location (city/town and state)
- 4) The last bonus you scored
- 5) The next bonus you are heading for

Note: Once you have finished recording your information, if you wish to listen to your message, press the # key and then the number 1. You may then accept it or re-record.

Rest Bonus

REST3

Document a stop for four (4) or more hours starting on Wednesday, June 23, 2021.

Requirements:

- ▶ Document a stop for 4 or more hours beginning on the starting day above
- ▶ Earn **18 points per minute** for staying in one place for a minimum of 4 hours, up to 8 hours maximum credit
- ▶ Your starting receipt may be on Tuesday, but you must then document at least 4 hours on Wednesday (no points are earned before 12:00:01 AM that day).
- ▶ As long as you begin your rest on the starting day, you can continue earning credit on the following day.
- ▶ Reminder: All times are local and the Rest Bonus must start on the specified day *for time zone you are in.*

Tracking Bonus

TRK3

1000 points

Earn points for using a satellite tracking system that is functioning properly and leaving tracks of your position accessible by Iron Butt Rally Staff.

Destination Bonuses

HL

1923 points

The H.L. Hunley
N Water St near State St
Mobile, AL
30.6969, -88.0404
24 Hours



The first submarine successfully used in warfare was assembled here in Mobile in 1863.

Take a photo of "The Hunley" historical marker.

OFFICE

288 points

The First Office Park
Office Park Cir near Cahaba Rd
Birmingham, AL
33.4791, -86.7700
24 Hours



The first office park in the U.S. was developed here in 1955.

Take a photo of the "America's First Office Park" historical marker.

SATURN

3290 points

Saturn V
1 Tranquility Base
Huntsville, AL
34.7111, -86.6561
AFTER 1200 CDT, June 28, 2021; Daylight



We couldn't let you leave Huntsville without paying tribute to the Apollo program.

Take a photo of the Saturn V rocket adjacent to the Davidson Center for Space Exploration with your motorcycle in the photo

LNIGHT

844 points

Charles Lindbergh's First Night Flight

AR-144

Lake Village, AR

33.3545, -91.2684

Daylight



In April 1923, an unknown 21-year-old mail pilot experienced engine trouble and landed his plane on the now-abandoned golf course behind this site. That pilot, Charles Lindbergh, took his unexpected host for a moonlight flight down the river. It was the first time Lindbergh had flown at night, but certainly not the last.

Take a photo of the stone monument to Lindbergh's first night flight with your flag on the stone plinth supporting it.

LP

2464 points

Beginning Point of the Louisiana Purchase Survey

AR-362

Blackton Area, AR

34.6473, -91.0542

0600-2100



The starting point for survey of the Louisiana Purchase in 1812 is located in a swamp. You would think they could have chosen a dry spot.

Take a photo of the stone which reads starting "This stone marks the base established Nov. 10, 1815." This marker is reached by walking approximately 600 feet along the boardwalk from the end of Baseline Road (AR-362) in Louisiana Purchase Historic State Park.

CHIMI

2045 points

Chimichanga
311 N Court Ave
Tucson, AZ
32.2258, -110.9744
Daylight



According to one source, Monica Flin, the founder of the Tucson, Arizona, restaurant El Charro, accidentally dropped a burrito into the deep-fat fryer in 1922. She immediately began to utter a Spanish profanity beginning "chi...", but quickly stopped herself and instead exclaimed chimichanga, a Spanish equivalent of "thingamajig".

Take a photo of the El Charro café with your motorcycle in the picture.

CODE

1652 points

Navajo Code Talkers
Window Rock Tribal Park & Veterans Memorial
Window Rock, AZ
35.6813, -109.0494
0800-1700



The most significant and successful military code of WWII was developed by the Code Talkers using their native languages.

Take a photo of the Navajo Code Talker Memorial Statue with Window Rock in the background AND get a time-dated receipt from Window Rock, Arizona showing between the hours of 0800 and 1700.

DOUGLAS

3804 points

First International Airport
W Airport Rd near 11th St
Douglas, AZ
31.3460, -109.5109
Daylight



At this location in 1933, First Lady Eleanor Roosevelt dedicated Douglas International Airport as the first international airport in the US.

Take a photo of Border Air Museum with your motorcycle in the photo.

ADAMS

1828 points

Maj. Michael Adams
1/2 mile west of Trona Rd.
Johannesburg Area, CA
35.4198, -117.6018
Daylight



Maj. Michael Adams was the first In-Flight Fatality of the American Space Program. Maj. Adams and his X-15 crashed here on Nov. 15, 1967.

Notes: Reaching this location requires riding approximately 1/2 mile of unimproved dirt road. The turn off from Trona Rd is at 35.4179, -117.5930, 4.0 road miles north of the junction of US-395 & Trona Rd, and 17.1 road miles south of the junction of CA-178 & Trona Rd. There is no identifying sign at the road to the site from either direction on Trona Rd.

Take a photo of the Memorial Marker to Major Adams with your motorcycle in the photo.

BATTERY

11787 points

Battery Point Lighthouse
Lighthouse Way
Crescent City, CA
41.7442, -124.2031
Daylight, check tides



This lighthouse marks the first location in history where an Iron Butt Rally rider had to wade through waist high seawater, three times, to get a bonus photo. We hope you time low tide better and keep your pants dry.

Take a photo of the Battery Point Lighthouse historical marker on the side of the shed next to the lighthouse. You must cross to the lighthouse island in order to obtain this photo.

CYCLOTRON

1677 points

The Lawrence 37-Inch Cyclotron
1 Centennial Drive
Berkeley, CA
37.8792, -122.2459
Daylight



This is the electromagnet from the world's first major cyclotron. Weighing in at 85 tons, this cyclotron created the first man-made element, Technetium.

Take a photo of the 37-Inch Cyclotron outside the Lawrence Hall of Science. Your motorcycle must be in the picture.

FREETH

2504 points

George Freeth
Fishermans Wharf
Redondo Beach, CA
33.8392, -118.3910
24 Hours



George Freeth, born in Honolulu in 1883, revived the lost art of surfing while standing on a board. In 1907, he began displaying this skill to people in Redondo Beach. He also invented the torpedo shaped rescue buoy that is now used world wide.

Take a photo of the George Freeth Memorial at the Redondo Beach Pier.

IC

755 points

First Commercially Practicable Integrated Circuit
844 E. Charleston Rd
Palo Alto, CA
37.4218, -122.1033
24 Hours



On this site in 1959, Dr. Noyce of Fairchild Semiconductor invented the first integrated circuit that could be produced commercially.

Take a photo of the "First Commercially Practicable Integrated Circuit" marker.

LOUD

1750 points

Birthplace of the Loudspeaker
1026 1st St
Napa, CA
38.2990, -122.2860
24 Hours



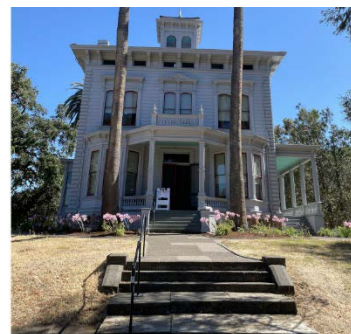
The first loudspeaker was invented here in 1915. Of course the first thing that happened was the loud shriek of feedback because the microphone was too close to the speaker.

Take a photo of the historical marker with the loudspeaker sculpture on top.

MUIR

2054 points

John Muir
4202 Alhambra Ave
Martinez, CA
37.9913, -122.1313
1000-1700



John Muir is known as the "Father of the National Parks". This essayist, engineer, and naturalist helped preserve Yosemite Valley, Sequoia National Park, and many other wilderness areas.

Take a photo of the front of the Muir House at John Muir NHS with your flag on the concrete steps in front of the house or on the steel railing for those steps.

PEETS

1284 points

Peet's Coffee
2124 Vine St
Berkeley, CA
37.8803, -122.2683
Daylight

Miles of Progress



Immigrant Alfred Peet opened his first coffee roastery here in 1966, sparking the revolution of gourmet coffee in the US.

Take a photo of the "Peet's Coffee & Tea" historical marker next to the front door of the café.

PETROLIA

2833 points

California's First Drilled Oil Wells
Sherman Ave at Front St
Petroliia, CA
40.3244, -124.2871
24 Hours



It wasn't in Southern California but rather here, on the Lost Coast, that saw the first oil drilled in California.

Take a photo of the "California's First Drilled Oil Wells" stone marker.

ROOTBEER

2610 points

Roy Allen
13 W Pine St
Lodi, CA
38.1343, -121.2729
24 Hours



On this site in June 1919, Roy Allen served the first frosty mug of A & W Root Beer.

Take a photo of the A & W Root Beer historical marker in the sidewalk.

RUTAN**1764 points**

Rutan Voyager
 Airport Blvd
 Mojave, CA
 35.0555, -118.1582
 Daylight



Inside this small building you will find a scale replica of the original Voyager, designed by Burt Rutan and built here at Mojave Airport. In 1986, it completed the first successful circumnavigation of the planet, non-stop, and non-refueled.

Take a photo of the building showing the large model of the Voyager and the SpaceShipOne Replica.

SKI**3397 points**

Longboard Ski Races
 Johnsville-Eureka Lake Rd
 Johnsville Area, CA
 39.7663, -120.7000
 Daylight



Gold Mountain, now Eureka Peak, is the site of some of the first organized ski races in the western hemisphere. Collecting this bonus requires a short hike of approximately 0.2 miles from the parking lot. There are three trails from the parking lot, only two of which lead to the lodge. The gravel road to Eureka Lake is NOT one of them.

Take a photo front of the Intorf Lodge building with the Longboard Ski Races historical marker showing below the lodge name sign.

SPEEDEE

508 points

Speedee Hamburgers
10207 Lakewood Blvd
Downey, CA
33.9474, -118.1175
Daylight



This is the oldest existing McDonald's hamburger stand in the world. Opened in 1953, it was the third stand franchised by Richard and Maurice McDonald.

Take a photo of the large Hamburgers sign with Speedee on the top. Your motorcycle must be in the photo.

SUTTER

5708 points

Sutter's Mill
CA-49
Coloma, CA
38.8035, -120.8923
0800-2000



On January 24, 1848 carpenter James Marshall discovered flakes of gold in the American River while building a sawmill for John Sutter. The rest is history.

Take a photo of the large stone monument to Sutter's Mill Site at the river's edge.

TEDDY

3275 points

Roosevelt - Muir Meeting Site
Southside Dr
Yosemite Valley area, CA
37.7157, -119.6596
Daylight



On this site on May 17, 1907, President Theodore Roosevelt and John Muir sat beside a campfire and talked of forest and wilderness preservation.

Take a photo of the President Theodore Roosevelt historical marker.

WABBIT**1809 points**

U.S. Rabbit Experimental Station
8384 Cypress Ave
Fontana, CA
34.1014, -117.4446
24 Hours



On this site in 1928, the Federal Government established the first and only experimental station in the US devoted solely to research on the breeding and raising of rabbits. No, we don't get it either. Rabbits seem to have a good handle on that without our help.

RULISON**4520 points**

Rulison Test Site
Unnamed road
Parachute Area, CO
39.4054, -107.9485
Daylight



On 9/10/1969, the US Atomic Energy Commission detonated a 40-kiloton nuclear bomb at a depth of 8,400 feet under the community of Rulison, Colorado. This was done to test whether mining for natural gas could be aided by freeing it with nuclear detonations. Seems like a not great idea, in hindsight.

Take a photo of the "Project Rulison" marker with your motorcycle in the picture. The last 5 miles leading to this bonus is a mix of good packed gravel and loose rock. The road may be treacherous if it has rained recently. Note: Respect the site as it is on private property. Do NOT hang your flag on the fence.

GATOR**710 points**

Gatorade's Birthplace
Gale Lemarand Dr near University Ave
Gainesville, FL
29.6500, -82.3503
24 Hours



You've probably consumed some Gatorade yourself over the course of this event. We hope you chose "blue" because that's the best one.

Take a photo of the "Gatorade's Birthplace" historical marker.

SHUTTLE

3551 points

Kennedy Space Center
Space Commerce Way
Merritt Island, FL
28.5247, -80.6805
0900-1800



We really wanted you to go into the park and check out the Saturn rocket on display but the \$60 needed to walk the last 300 feet seemed egregious. Instead, check out the Space Shuttle Booster Rocket from the parking area.

Take a photo of the shuttle booster with your motorcycle in the picture and get a parking receipt for the space center complex. The picture may be taken from the northern parking area at approximately 28.5230, -80.6811

SPEED

1496 points

The Birthplace of Speed
Ocean Shore Blvd at E Granada Blvd
Ormond Beach, FL
29.2924, -81.0394
Sunrise to Sunset and within Open Hours



This marker is a reminder that every new invention of transport quickly devolves into a race to see who can make one go faster.

Take a photo of the "Birthplace of Speed" marker.

TSA

2365 points

The World's First Scheduled Airline
St. Petersburg: St Petersburg Pier
Tampa: Bayshore Blvd at W Platt St
St. Petersburg and Tampa, FL
27.7727, -82.6277 AND 27.9420, -82.4594
Daylight



The world's first scheduled airline carried passengers and cargo across the bay between St. Petersburg and Tampa, Florida. This bonus requires that you take photos that signify the endpoints of the route.

Take a photo of the full-scale replica statue of the Benoist Airboat at the St. Petersburg Pier and the "Commemorating The World's First Scheduled Commercial Airline" marker in Tampa.

EPPS

1357 points

Ben. T Epps
Ben Epps Dr
Athens, GA
33.9519, -83.3246
24 Hours



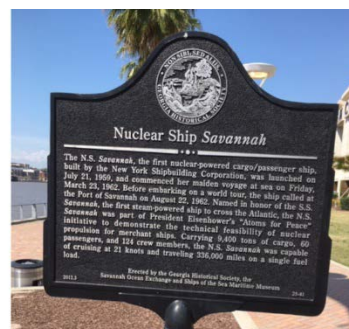
Ben T. Epps built and flew the first airplane in the state of Georgia in 1907.

Take a photo of the "Ben T. Epps" historical marker at the airport bearing his name.

SAVANNAH

4524 points

N.S. Savannah
1 International Dr
Savannah, GA
32.0837, -81.0886
Daylight



The N.S. Savannah was the first nuclear powered cargo ship. It was part of President Eisenhower's "Atoms for Peace" initiative.

Take a photo of the "N.S. Savannah" historical marker on the grounds of Savannah Convention Center. It is southwest of the main building along the river.

WAFFLE

2712 points

Waffle House
2719 E College Ave
Decatur, GA
33.7747, -84.2784
24 Hours



The first Waffle House was opened here in 1955 by Joe Rogers, Sr. and Tom Forkner. Of course this bonus is available 24 hours!

Take a photo of "The Waffle House" historical marker outside the Waffle House museum.

LIFTS

2338 points

Ski Lifts
ID-75
Ketchum Area, ID
43.7137, -114.3754
24 Hours



The first ski chair lifts were developed here in Sun Valley by railroad engineers.

Take a photo of the "Ski Lifts" historical marker with your motorcycle in the photo.

POTLATCH

4277 points

Potlatch Mill
Sixth St
Potlatch, ID
46.9250, -116.9028
24 Hours



In 1920, Weyerhaeuser operated the largest lumber mill in the world here in Potlatch, Idaho.

Take a photo of the "World's Largest Mill" historical marker.

FTS

4820 points

First Automated Electric Traffic Signal
E Main St at N Rangeline Rd
Carmel, IN
39.9785, -86.1269
24 hours



The first automated electric traffic signal was installed here at the intersection of Main and Rangeline in Carmel.

Take a photo of the First Traffic Signal plaque. The plaque is at ground level, partially hidden by shrubbery.

CADDO

522 points

First Over Water Oil Well
LA-1 at Williamson Pkwy
Oil City, LA

32.7271, -93.9702

Daylight



The world's first over water oil well was completed here in 1911

Take a photo of the "First Over Water Oil Well" historical marker.

STEAMER

1810 points

The Steamer "New Orleans"
Decatur St at St Peter
New Orleans, LA

29.9568, -90.0625

Daylight



The first steamboat to successfully navigate the Ohio and Mississippi rivers arrived here in 1812.

Take a photo of "The Steamer New Orleans" historical marker.

PMILL

5986 points

Pillsbury Mill
SE Main St at SE 3rd Ave
Minneapolis, MN

44.9838, -93.2534

Daylight



The Pillsbury A Mill was the world's largest flour mill when completed in 1881 on this site.

Take a photo of the "Man Lifting Wheat Sack" statue on the corner of SE Main St and SE 3rd Ave.

9ABD

1207 points

Willis Porter Corwin
117 E McCarty St
Jefferson City, MO
38.5755, -92.1729
24 Hours



In 1917, 18-year old Willis Corwin became the first to successfully receive and re-transmit a transcontinental radio Morse Code message. Corwin received the message from a station in Denver and passed it on to a station in Albany, NY.

Take a photo of the "Willis Porter Corwin" historical marker on the wall along McCarty St.

BREAD

2511 points

Sliced Bread
1st St at Elm St
Chillicothe, MO
39.7881, -93.5514
24 Hours



On July 7, 1928 the first machine-sliced bread was produced and made available to grocery stores in town. All the best things in the world are now referenced to this date.

Take a photo of the "Chillicothe Missouri - The Home of Sliced Bread" historical marker.

COLA

1073 points

Joseph Biedenharn
Levee St near Clay St
Vicksburg, MS
32.3510, -90.8839
Daylight

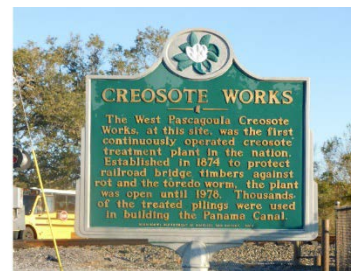


Joseph Biedenharn, in 1894, was the first to put Coca-Cola in bottles so he could deliver it to rural areas outside Vicksburg.

Take a photo of the "Joseph Biedenharn and the First Bottling of Coca-Cola" mural on the art wall along Levee St.

CREO**2036 points**

Creosote Works
Graveline Rd near Old Spanish Trail
Gautier, MS
30.3779, -88.6137
24 Hours



The West Pascagoula Creosote works, at this site, was the first continuously operated creosote plant in the US. Established in 1874 to supply the railroad industry with bridge timbers protected against rot and worms, they also sent thousands of pilings south for the building of the Panama Canal

Take a photo of the "Creosote Works" historical marker.

HOPSON**760 points**

First Mechanized Cotton Picker
Southern junction of US-49 & MS-322
Clarksdale, MS
34.1595, -90.5447
24 Hours



On this site in 1944, the Hopson Planting Co and International Harvester introduced the first commercially produced mechanical cotton picker.

Take a photo of the "Hopson Plantation" historical marker.

MSSPIKE**864 points**

Final Spike
100 N Front St
Winona, MS
33.4822, -89.7276
24 Hours



The final spike of the Old Mississippi Central railway was driven here in 1860 establishing the first direct rail line from the Great Lakes to the Gulf of Mexico.

Take a photo of the "Final Spike" marker outside the old rail station building.

STM

8810 points

Stephen Tyng Mather
Logan Pass Visitor Center
Browning Area, MT
48.6957, -113.7177
24 hours



As its first director, Stephen Tyng Mather laid the foundation of the National Park Service.

Take a photo of the plaque honoring Stephen Tyng Mather next to the staircase adjacent the Logan Pass Visitor Center parking lot.

LIFE

10917 points

Chicamacomico Life-Saving Station
23645 NC-12
Rodanthe, NC
35.5957, -75.4666
Daylight



In 1915 the U.S. Life-Saving Service and US Revenue Cutter Service were merged to form the Coast Guard. Chicamacomico is the most complete remaining USLSS site in the nation.

Take a photo of the Chicamacomico Lifesaving Station sign along the picket fence at the west side of the museum grounds.

SMOKEY

2206 points

Smokey Bear
118 Smokey Bear Blvd
Capitan, NM
33.5464, -105.5742
0900-1630



This is the resting place of the first living Smokey Bear, rescued as a badly burned cub from a blackened tree in 1950.

Take a photo of the marker at Smokey Bear's resting place.

TRINITY

1005 points

Atomic development - National Museum of Nuclear Science
601 Eubank Blvd SE
Albuquerque, NM
35.0651, -106.5334
Daylight



We cannot get you onto the actual Trinity Test Site during the rally. At the National Museum of Nuclear Science you can view a replica of the Trinity test tower and device.

Take a photo of the Trinity Test Tower replica with your motorcycle in the picture.

XMAS

2037 points

Christmas Breakfast Burrito
210 W San Francisco St
Santa Fe, NM
35.6876, -105.9410
24 Hours



Tia Sophia's claims to have coined the term Breakfast Burrito and the use of the word "Christmas" to describe dishes served with both red and green chile.

Take a photo of the front of Tia Sophia's with their sign above the door visible.

CLOWN

473 points

Clown Motel
521 N Main St
Tonopah, NV
38.0726, -117.2380
24 Hours



Tonopah is home to the first, and thankfully only, motel decorated entirely in a clown theme. Don't question this. It just is.

Take a photo of the Clown Motel sign on the motel grounds with your motorcycle in the picture.

TRANSCON

1083 points

First Transcontinental Telephone Line
680 Wendover Blvd
West Wendover, NV
40.7361, -114.0436
24 Hours



The first transcontinental telephone line was completed at this point in 1914. We've been on hold ever since.

Take a photo of "The First Transcontinental Telephone Line" marker outside the Montego Bay Resort.

OVEN

2514 points

The First Glass Door Oven
2701 Spring Grove Ave
Cincinnati, OH
39.1308, -84.5370
24 Hours



The first glass door oven was invented and manufactured here in 1909.

Take a photo of the "First Glass Door Oven" historical marker.

PINOT

5092 points

Oregon History - Pinot Noir
Elgarose Rd at Vineyard Ln
Roseburg Area, OR
43.2726, -123.5006
24 Hours



Oregon's famed Pinot Noir wine industry started here in Roseburg in 1961

Take a photo of the "Oregon History - Pinot Noir" historic marker.

TCRACE

3924 points

America's First Transcontinental Automobile Race
US-20
Cascadia Area, OR
44.4036, -122.3798
24 Hours



The first car to cross the Cascade Mountains did so near here on the Santiam Wagon Road. That occurred as part of a two-car race that started in New York City six weeks earlier.

Take a photo of the "Transcontinental Automobile Race" sign.

IGOTTHIS

5051 points

Here, Hold My Beer
PA-8
Titusville, PA
41.6182, -79.6713
24 Hours



The first successful device for increasing the flow of oil by setting off an explosion. No one was left to report on the unsuccessful attempts.

Take a photo of the "Roberts Torpedo" historical marker.

HUNLEY

1851 points

The H.L. Hunley at War
John St at Meeting St
Charleston, SC
32.7893, -79.9358
Daylight



The H.L. Hunley became the first submarine in history to sink an enemy ship.

Take a photo of the H.L. Hunley model replica and adjacent information marker.

Miles of Progress

Y12

1230 points

Oak Ridge - Secret City and Y12 Plant
NC-95 at S Tulane Ave
Oak Ridge, TN
36.0137, -84.2579
0800-2000



1943 saw groundbreaking on Oak Ridge's secret Y-12 plant and the X-10 reactor that supported the Manhattan Project.

Take a photo of the "1943" historical marker.

HE

663 points

Amarillo Helium Plant
W Amarillo Blvd near TX-335
Amarillo, TX
35.1914, -101.9549
24 Hours



This plant was the first to produce helium in the Texas Panhandle and from 1929 to 1943, it furnished almost all the world's supply of the element.

Take a photo of the "Amarillo Helium Plant" historical marker.

MERCURY

6380 points

World's Quicksilver Capital
FM-170 at Ivey Rd
Terlingua, TX
29.3195, -103.6065
24 Hours



With the Mother-Ore Cinnabar strike in 1890, Terlingua became the world's quicksilver capital, yielding 40 percent of the nation's need by 1922.

Take a photo of the "Terlingua" historical marker.

REPLICA

3188 points

Space Shuttle Independence
1601 E Nasa Pkwy
Houston, TX
29.5520, -95.0972
1000-1800



Space Shuttle Independence, formerly known as Explorer, is a full-scale, high-fidelity replica of the Space Shuttle. It was built using schematics, blueprints and archival documents provided by NASA and shuttle contractors.

Take a photo of the Space Shuttle replica Independence atop the NASA N905NA carrier plane. Your motorcycle must be in the photo.

ROPING

1357 points

World's First Championship Jackrabbit Roping
W 8th St near N Sam Houston Ave
Odessa, TX
31.8497, -102.3744
2000, June 29, 2021



This was planned only as a "hare-brained" publicity stunt in 1932.

Have your photo taken by IBR staff as a group at the jackrabbit statue adjacent the "World's First Championship Jackrabbit Roping" historical marker.

TROUT

3058 points

Counter-Balanced Oil Well Pump
601 S Raguet St
Lufkin, TX
31.3324, -94.7312
Daylight



You've seen those rocking, counter-balanced oil well pumps all over the west. They were invented here in Lufkin in 1926 by W.C. Trout.

This bonus requires two photos. Take a photo of the "W.C. Trout and the Counter-Balanced Pumping Unit" historical marker and take a photo of the example pump nearby. The marker and model are adjacent the parking lot for Lukfin Industries. The pump is located at approximately 31.3330, -94.7313.

D2D

336 points

First Dawn to Dusk Flight
133 E Center St
Logan, UT
41.7314, -111.8316
Daylight



Col. Russel Maugan of Logan, Utah, made the first daylight flight across the continent June 23, 1924. Leaving New York at dawn, he landed in San Francisco at 9:40pm, one minute before official dusk.

Take a photo of the "First Dawn to Dusk Flight Across America" marker.

KFC

80 points

First Kentucky Fried Chicken Restaurant
3890 S. State St
Salt Lake City, UT
40.6874, -111.8888
Daylight



The first Kentucky Fried Chicken restaurant in the US was, believe it or not, started in Salt Lake City when Pete Harman negotiated the first franchise for Harlan Sanders' chicken recipe.

Take a photo of the statue of Harlan Sanders and Pete Harman on the north side of the restaurant.

ZCMI

203 points

Zion's Co-operative Mercantile Institution
22 Main St
Moroni, UT
39.5251, -111.5843
Daylight



From 1902 to 1932, this building was an official outlet of ZCMI, "America's First Department Store".

Take a photo of the "ZCMI Building" historical marker on the front of the building at 22 Main St.

POT

1889 points

First Legal Cannabis Shop
2733 4th Ave S
Seattle, WA
47.5788, -122.3293
24 Hours



On July 8, 2014 the first legal cannabis shop in Seattle opened to great fanfare.

Take a photo of the "Cannabis City - Seattle's First Pot Shop" historical marker on the front of the building.

SPARK

1222 points

The Spark
Pritchard Park, Ohio St near WI-11
Racine, WI
42.6991, -87.8385
Daylight



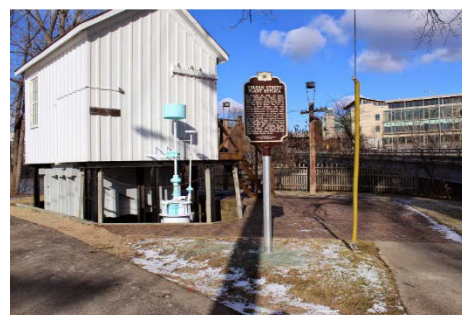
Rev. Dr. Carhart, in 1873, developed and operated the first light self-propelled vehicle in the US. The good people of Racine threatened to run Carhart and his "infernally machine" out of town.

Take a photo of "The Spark" historical marker with your motorcycle in the picture.

VULCAN

1722 points

First Edison Hydroelectric Plant
530 S Vulcan St
Appleton, WI
44.2581, -88.3973
24 Hours



The first Edison hydroelectric power generation station began operation here in Appleton, WI.

Take a photo of the Vulcan Street Plant Replica and historical marker.

BOOM

5874 points

What Could Possibly Go Wrong?

Visit two locations where questionable choices were made in the names of science and profit.

Successfully claim both the IGOTTHIS and RULISON bonuses

FISSION

2853 points

Manhattan Project

Make the connection between Secret City where U-235 was refined from natural Uranium using TVA hydroelectric power and north central New Mexico where assembly and testing occurred.

Successfully claim both the Y12 and TRINITY bonuses

NIRVANA

4680 points

Two Great Tastes that Go Great Together

You won't find better chile (sauce) than in New Mexico. Pair that with a chimichanga and your taste buds will be in heaven.

Successfully claim both the XMAS and CHIMI bonuses

ORBIT

7612 points

Some Assembly Required

Visit both the Kennedy Space Center Visitor Complex and Space Center Houston

Successfully claim both the SHUTTLE and REPLICA bonuses

PARKS

16452 points

The Foundations for Protection of Wild Spaces

Visit locations that commemorate the creation of National Parks and the people behind them.

Successfully claim the TEDDY, MUIR, and STM bonuses

SUB

5279 points

Hunley Combo

Visit both the Hunley submarine replica in Charleston, SC and Mobile, AL where it was built.

Successfully claim both the HUNLEY and HL bonuses

Finish Information

Finish

Provo Marriott Hotel and Convention Center

101 W 100 N

Provo, Utah 84601

801-377-4700

Friday, July 2, 2021 8:00 am to 10:00 am

Rally staff will be available at 5 am for scoring.

Time penalty begins at 8:00:01 am. After 8:00:00 am there will be a **20 points per minute** penalty for being late. "Minutes" will be rounded up at one second past the key time. For example, 8:00:01 (one second past 8:00 am) will be counted as 1 minute late. Any rider who arrives after 10:00:00 pm (beginning 10:00:01 am) will not be considered a rally finisher.

If you will be late or unable to arrive at the finish, call the Rallymaster immediately
